

# 10th 健康生活博覽

## HEALTH EXPO 2016

2016/6/17-19 (Fri-Sun)

Time: 6/17-18:10am-8pm, 6/19:10am-7pm

Venue: Hall 5FG, Hong Kong Convention and Exhibition Centre

Ticket Price: \$30

Senior Ticket Price: \$20 (For ages 65 and above. Proof of age will be requested upon entry.)

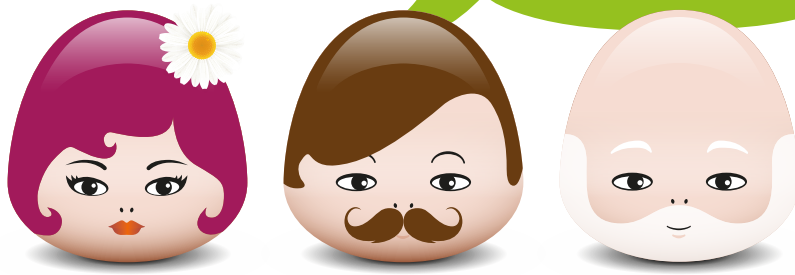
Population aging is becoming a major concern in Hong Kong. The current Hong Kong population of 65 years old or above already reaches more than a million and expected to surpass 2 million in 2031. Population aging leads to decline in workforce and increase in elderly health care expenditure, the impact is not solely a personal problem but an entire social issue instead.

Being self-regard and providing responsible care for elderly parents are fundamental commitments. It is elemental to strengthen the knowledge towards health issue. We hope to provide a brand new Health Expo 2016 with enlarged exhibit area, on top of the previous solid foundation, for the sake of a better, larger and all-in-one health information hub in Hong Kong.

Healthy lifestyle help prevent disease before it happens

New technologies help take good care of the elderly

Integration of Chinese-Western medicine help speed up rehabilitation



### ADVISORY BOARD

#### Prof. Vivian Taam Wong, JP

Chief Advisor of Health Expo; former Chief Executive, Hospital Authority; former Chief Executive, Queen Mary Hospital; former President, Hong Kong Association for Integration of Chinese-Western Medicine

#### Dr. Chan Nim Tak, Douglas

Co-Chairman, The Hong Kong Medical Association Task Force on Dementia Awareness and Management in the Community

#### Dr. Dai Lok Kwan, David, JP

Chairman, Hong Kong Alzheimer's Disease Association

#### Prof. Wang, HuiMin

President, The Hong Kong Association of Traditional Chinese Medicine

#### Dr. MOK KWAN Ngan-hing Edith

Vice-Chairperson, The Hong Kong Society for Rehabilitation

#### Dr. Wong Ping San John

President, Physical Fitness Association of Hong Kong, China

#### Ms Hui Yin-hing, Erika

President, Hong Kong College of Chinese Medicinal Nursing Ltd.; Chairman, Chinese - Western Integrative Nursing Committee

#### Mr. Hui Mei Tak

Executive Head Chef, Pak Loh Chiu Chow Restaurant; Healthy Diet Consultant

#### Mr. Lam Kar Yeung

Registered Chinese Medicine Practitioner, Healthy Diet Consultant

Organizer:



Co-organizer/  
Appointed Radio:



Supporting  
Organizations:



Cooperating  
Partners:



Supporting Media:



Special Thanks To:

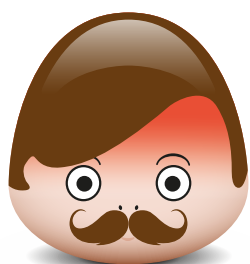


(As of 11 Jun, 2016)

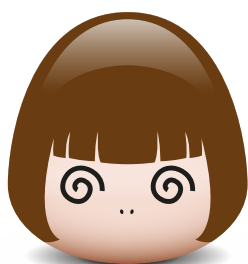
# TARGET AUDIENCE: 40+

40+ adults who are conscious about their own health and care much for their parents' too.

Take care of yourself.  
Take good care of your parents.



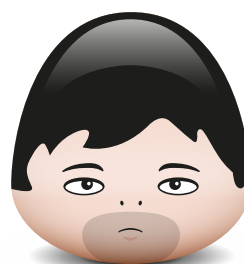
Hypertension



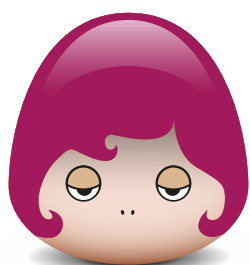
Stroke



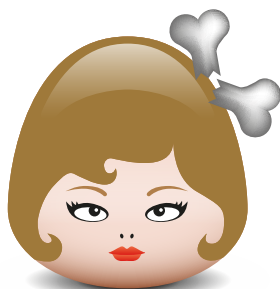
High cholesterol level



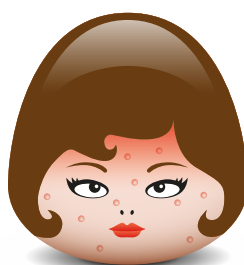
Alzheimer's Disease



Diabetes



Osteoporosis



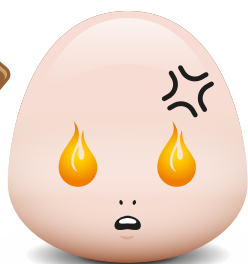
Eczema



Mental problems



Headache



Bipolar disorder



Glaucoma

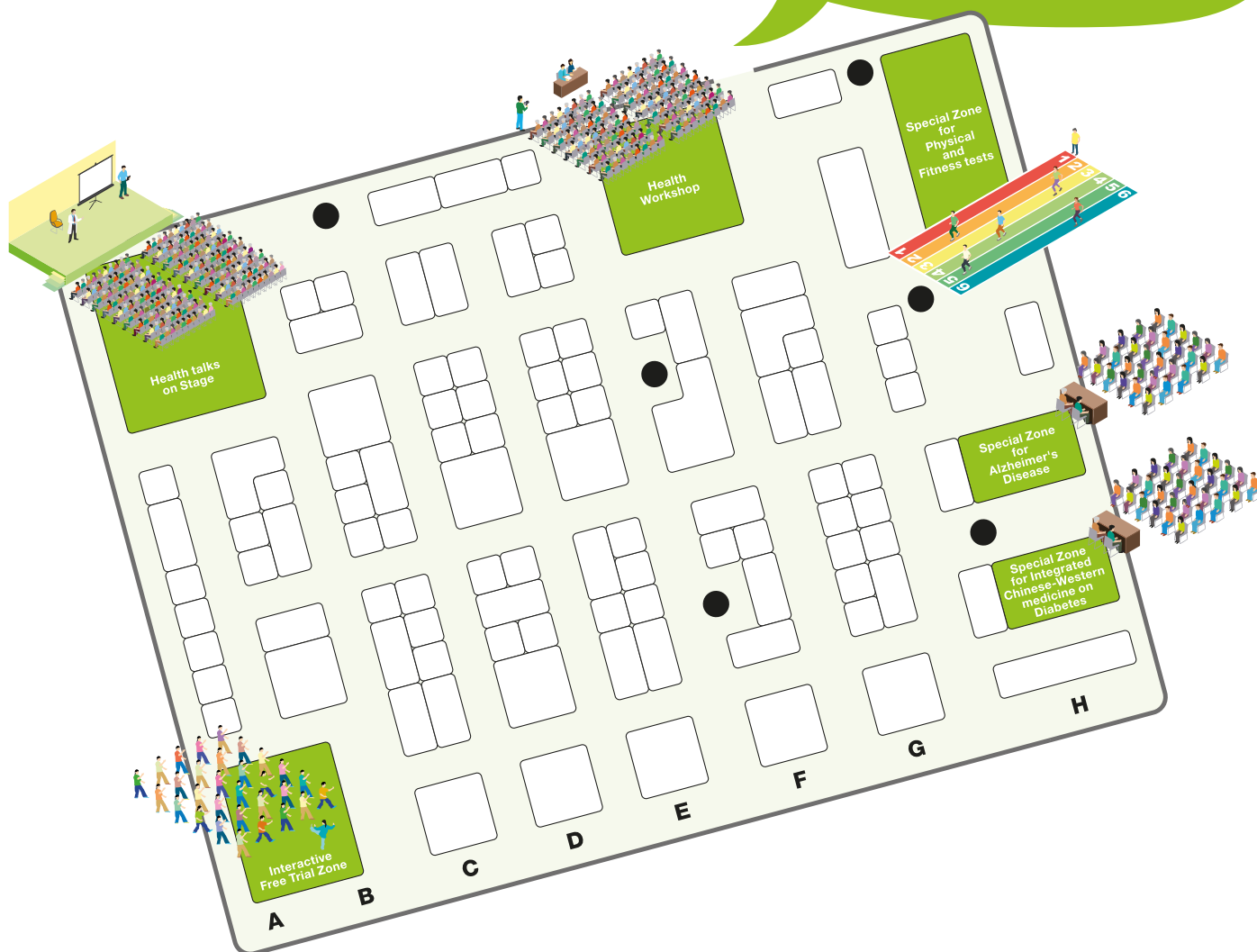


Anxiety

# SOLUTION: HEALTH EXPO 2016

Categories of Exhibits:  
Health technologies  
Health care and nourishment  
Organic life  
Medicine  
Rehabilitation  
Physical fitness

Interactive zones  
to attract more visitors



Join Health Expo and promote your products and services through direct and in-depth communications with your potential customers.

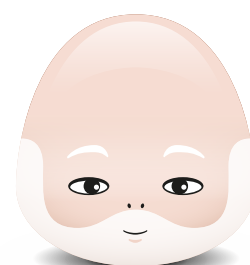
# PUBLICITY

- TV commercials on TVB
- Metro Boardcast
- Oriental Daily
- Social Media
- Metroradio.com
- Metroradio Apps
- Professional Public Relation

## Recent media coverage



# 2015 HEALTH EXPO REVIEW



# 2016 EXHIBITORS

## **ABLE HEALTH**

愛保健康用品

## **ACADEMY OF MAGNETIC THERAPY**

磁康綜合物理治療及痛症復康中心

## **AIA Portfolio Management**

友邦資產管理

## **AQ BIO TECHNOLOGY**

艾橋生物科技集團有限公司

## **AQUA SHINE MEDICAL LIMITED**

水之漾醫療醫學有限公司

## **ARIRANGION**

韓國阿里郎活性離子水

## **BAMBOOS PNS LTD**

百本專業護理服務有限公司

## **BREAD POWER LIMITED**

卡納亞洲有限公司

## **BWT WATER FILTER**

德國BWT濾水壺

## **CARE FOR YOUR HEART**

關心您的心 - 心臟病友互助組織

## **CHINESE ESSENCE**

## **HEALTH MANAGEMENT**

德善健康管理

## **Citibank (HK) Ltd.**

花旗銀行

## **CONSIDERATE CARE LIMITED**

生之本健康有限公司

## **DIAMOND & ARISSTO**

## **Dotdot Asia Ltd**

篤篤亞洲有限公司

## **EARTH SELECTIVES LIMITED**

天然工房 有機及天然產品展銷

## **Eaulier Medical Technology**

愛麗健醫療科技

## **ERC**

房協長者安居資源中心

## **FDRC**

金融糾紛調解中心

## **Firewood Health Products**

營富健康產品有限公司

## **FIUGGI Natural Spring Water**

聖禾全破壁靈芝孢子粉

## **FOUR G WELLNESS STUDIO**

## **GENNING (VITA GREEN)**

健靈有限公司 (維特健靈)

## **GreenConcept.com.hk**

綠意色光治療教室

## **HAIR AGAIN 2000 SERIES**

髮再生 健髮、育髮系列

## **HAPPY-RETIRED**

樂活 新中年

## **HeaKu Group (HK) Limited**

熊健集團(香港)有限公司

## **HEALTH AND GREEN LIMITED**

## **Health Plus Magazine**

健康創富

## **Health Supreme (INT'L) Ltd**

周林頻譜·諾優健(國際)有限公司

## **HealthCareersAsia.com**

## **HeHa Digital Health Limited**

爽樂健康科技有限公司

## **Hing Fai Tong**

慶輝堂

## **HK Alzheimer's Disease Assn**

香港認知障礙症協會

## **HKAIM**

香港中西醫結合醫學會

## **HKSR**

香港復康會

## **Hong Kong Association of Traditional Chinese Medicine**

香港中醫學會

## **HONG KONG COLLEGE OF CHINESE MEDICINAL NURSING**

香港中醫護理學院

## **HONG KONG HEALTH FOOD ASSN**

香港保健食品協會

## **HONG KONG ORGANIC RESOURCE CENTRE**

香港有機資源中心

## **HONG KONG SCIENCE & TECHNOLOGY PARKS CORPORATION**

香港科技園

## **IDEAHOM**

## **iFitness**

## **Inst. of Chiology Healing**

元氣自療學會

## **Janva Body & Skin Care**

## **Jasmine International Limited**

## **JVG DEVELOPMENT LTD**

## **KAI TAI CHINESE MEDICINE**

啟泰藥業(集團)有限公司

## **KONG FUNG Organic Mill**

港豐有機磨坊

## **KYORIN KENKO LTD**

## **Li Feng (HK) IHP Ltd**

麗豐國際(香港)保健品有限公司

## **LONG HING EXCELLENCE CO.,**

龍興卓越公司

## **LUCKY (HK) TRADING LTD**

祥佳(香港)貿易有限公司

## **MANULIFE (INTERNATION) LTD**

宏利人壽保險(國際)有限公司

## **MAX CHOICE**

大棧



# 2016 EXHIBITORS

## **MCMIA FOUNDATION LIMITED**

現代化中醫藥國際基金有限公司

## **MD PHARMACEUTICALS HK LTD**

### **Medicine Buddha Dharma Society (HK) Ltd.**

藥師法門佛學會(香港)有限公司

## **MING PAO PUBLICATIONS LTD**

明報出版社有限公司

## **Morinda Hong Kong Limited**

慕立達香港有限公司

## **NATURALIA GROUP**

韻濤集團

## **NEW YORK MEDICAL GROUP**

紐約醫療集團

## **Noble Health Co Ltd**

樂寶健康有限公司

## **OTIC FOUNDATION**

奧迪慈善基金

## **PAK LOH CHIU CHOW**

百樂潮州

## **PEDORTHIC TECHNOLOGY LTD**

足科矯形有限公司

## **Perfect Resources (HK) Limited**

完美資源(香港)有限公司

## **HKPFA**

中國香港體適能總會

## **PLANT ENERGY STEMTECH LTD**

植能量生命科技有限公司

## **PROPECTIN**

彩時亞洲有限公司

## **RAINBOW CREDIT UNION**

惠澤儲蓄互助社

## **REHABAID SOCIETY**

復康資源協會

## **SAMLO HEALTH ASSETS LTD**

森道健康產業有限公司

## **SCML TRADING COMPANY LTD**

成晉貿易有限公司

## **Shi Xu Taichi & Nourishing Life Academy**

師虛太極養生學院

## **Special Zone for Physical & Fitness Tests**

運動及體適能測試專區

## **STARNERGY HEALTH CREATION**

衍星體健有限公司

## **TAK THAI TONG & WO TAI**

德泰堂中藥廠暨和泰骨刺醫療院

## **TANITA**

## **THE BICYCLE SHOP (HK)**

香港單車專門店

## **THE COMMERCIAL PRESS**

商務印書館(香港)有限公司

## **The Hong Kong Stroke Association**

新健社

## **THE PYRAMID CENTRE**

天地能量中心

## **TOP GLOBAL CREATION LTD.**

天地創建有限公司

## **TUNG TAK TEA FARM**

同德茶莊

## **US Pie Company**

美國派

## **Wai Yuen Tong Medicine Co., Ltd.**

位元堂藥廠有限公司

## **WATERFALL SPORTS & WELLNESS**

## **WISER CLUB · WISER HEALTH**

正本會·正本堂

## **XYBER FORCE**

世霸潛能

## **YHB SHOP INTERNATIONAL LIMITED**

秀美利國際有限公司

## **Hong Kong Y.W.C.A.**

香港基督教女青年會

大會推薦健康養生書籍

中藥醫緣

中醫生活

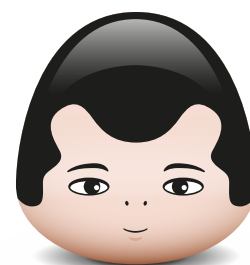
香港白內障基金

健邦國際有限公司

新宇宙國際有限公司

詩碧曼

樟木榕竹炭腳粉(香港直銷站)



# ORGANIZER & CO-ORGANIZER



## About the Organizer

In Express Expo Limited was established in 2000 with its focus in exhibition and event organization. IEE is best known for organizing the mega-scaled public exhibition Ani-Com & Games Hong Kong which is world famous for its success. Exhibitors include international leading brands of animation, comics, games and toys that attract hundreds of thousands of visitors every year.



For the trade sector, we have SISTERS BeautyPro Trade Fair for the professional beauty industry. SBPTF is held biannually in May and September.



In 2016, In Express Expo becomes the organizer of the 10th Health Expo.

Our objective is to promote the concept of healthy living to middle age and senior groups through a range of exhibits in health technology, healthy lifestyle and nutrition, organic life, medicine, rehabilitation and physical fitness etc. This B2C expo will bring the exhibitors and visitors together for a meaningful exchange of knowledge and ideas.

## About the Co-organizer

Metro Broadcast Corporation Limited currently operates 6 channels, namely Metro Finance, Metro Info, Metro Plus, Metro Finance Digital Channel and Metro Music Digital and Metro Life Digital. We are the first and only Hong Kong commercial radio broadcaster providing AM, FM and DAB services. Together with its web and app media, Metro Broadcast provides a wide range of programmes that take care of the needs of listeners from different industries and sectors.



Address: Units 12-15, 3/F, Elite Industrial Centre,  
883 Cheung Sha Wan Road, Lai Chi Kok, Kowloon, Hong Kong  
Tel: (852) 2344 0415  
Fax: (852) 2951 4142  
E-mail: health@iesg.com.hk